

BERNAT® WOVEN STITCH KNIT PILLOW



MATERIALS

Bernat® Softee® Chunky™ Tweeds™ (10.5 oz/300 g; 316 yds/289 m)
True Gray Tweed (11005) **2 balls** or 503 yds/460 m

Size U.S. 11 (8 mm) knitting needles **or size needed to obtain gauge.**
20" [51 cm] square pillow form.



KNIT | SKILL LEVEL: EASY

ABBREVIATIONS

Approx = Approximately

Beg = Beginning

Cont = Continue(ity)

K = Knit

P = Purl

Pat = Pattern

Rep = Repeat

RS = Right side

St(s) = Stitch(es)

WS = Wrong side

MEASUREMENTS

Approx 20" [51 cm] square.

GAUGE

11 sts and 14 rows = 4" [10 cm] in stocking st.

INSTRUCTIONS

FRONT

Cast on 53 sts. See chart on page 2.

1st row: (RS). K1. *K3. P1. Rep from * to last 4 sts. K4.

2nd row: K1. P3. *K1. P3. Rep from * to last st. K1.

3rd row: K1. *K3. P5. Rep from * to last 4 sts. K4.

4th row: K1. P3. *K5. P3. Rep from * to last st. K1.

5th row: As 3rd row.

6th row: As 4th row.

7th row: As 1st row.

8th row: As 2nd row.

9th row: K1. *P4. K3. P1. Rep from * to last 4 sts. P3. K1.

10th row: K4. *K1. P3. K4. Rep from * to last st. K1.

11th row: As 9th row.

12th row: As 10th row.

These 12 rows form Weave Pat.

Cont in Weave Pat until work from beg measures approx 20" [51 cm], ending on 8th row of pat. Cast off.

BACK (make 2 pieces alike)

Cast on 53 sts.

Ribbing: 1st row: (RS). K1. *P1. K1. Rep from * to end of row.

2nd row: P1. *K1. P1. Rep from * to end of row.

BERNAT® WOVEN STITCH KNIT PILLOW

3rd to 10th rows: Rep 1st and 2nd rows 4 times more.

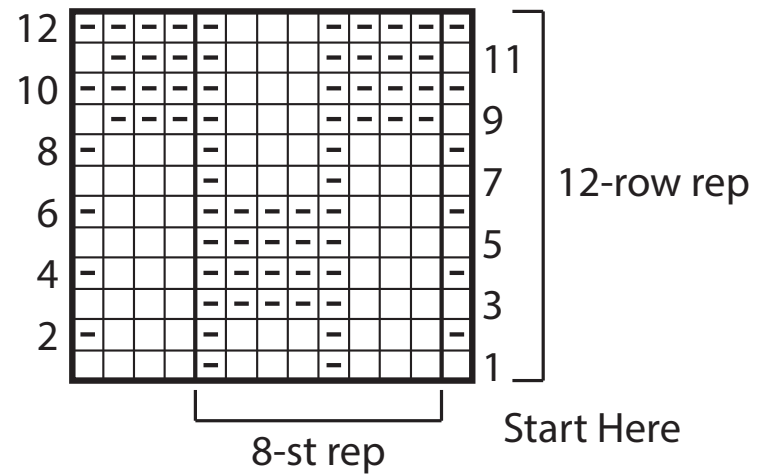
Proceed in stocking st (beg with a knit row) until work from beg measures 13" [33 cm], ending on a purl row.

Cast off.

FINISHING

Joining Front and Back: Overlap Back pieces to match Front, with ribbed section in center to create opening to insert pillow form. Working through all thicknesses, seam 4 sides of pillow. Insert pillow form.

Weave Pattern



KEY

☐ = Knit on RS rows. Purl on WS rows.

☒ = Purl on RS rows. Knit on WS rows.

